

Get References from JSTOR in GALILEO®

JSTOR contains many full text journal articles.

Conduct your search in JSTOR, and save the items you want to retain by clicking the *Save Citation* link under each citation.

When done, click the *View Saved Citations* link above the screen's first citation, and on the right.

[Citations on This Page](#) | [View Saved Citations](#)
You have saved 4 citations
[Citations](#)

Change the citation manager export option to: *in a new window*. Click *Export*. A new window opens with the citations in it.

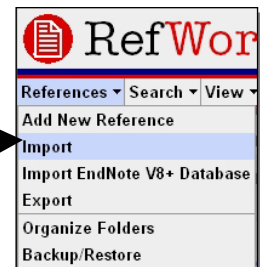
Export citations in a new window in citation-manager format.

Now you must choose one of the two options as shown below. Either option will move your JSTOR citations into RefWorks.

First Option

Save the new window with your citations in it: click *File > Save As...* Name the file. Log into RefWorks. Remember the file name and where it is saved.

Click *References > Import*.



The following window opens.

Change the *Import Filter/Data Source* and *Database* (points 1 and 2) to *JSTOR*. At point 3, select *Import Data from the following Text File*, browse to, and select the file name. Then click *Import* (point 4).



Import [How to Import](#) | [List of Filters & Databases](#) | [Request a Filter](#) [Back to Reference List](#)

Import Filter/Data Source **1** JSTOR
Database **2** JSTOR
Import References into Specify Folder (optional)
(Note that references are also put in the Last Imported folder)

Import Data from the following Text File
C:\My Documents\jstor.txt **3**
Encoding ANSI - Latin I Specify only if you specifically set the encoding when saving the text file; otherwise leave it as is

Import Data from the following Text

4

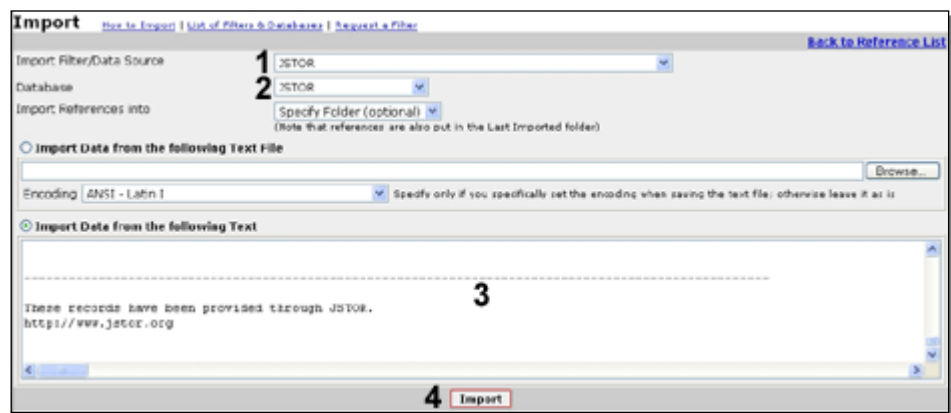
Second Option

Copy the citations in the window: click *Edit* > *Select All* or use the shortcut *Ctrl+A*. Click *Edit* > *Copy* the selection or use the shortcut *Ctrl+C* to copy the contents of the window. Log into RefWorks. Click *References* > *Import*.

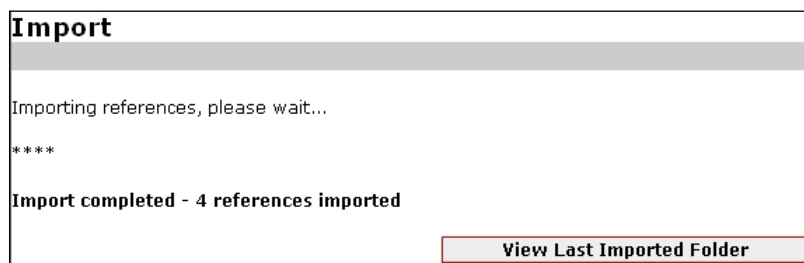


The following window opens.

Change the *Import Filter/Data Source* and *Database* (points 1 and 2) to *JSTOR*. At point 3, paste the selection (*Edit* > *Paste* or *Ctrl+V*). Then click *Import* (point 4).



Your JSTOR citations are placed in the *Last Imported* folder in RefWorks. Click *View Last Imported Folder* to **move them** into another folder..



References left in *Last Imported* will be copied to *References Not in a Folder*, and overwritten the next time you import. Move them to one of your other folders.