

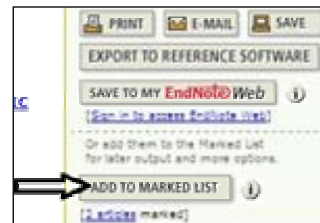
Get References from Web of Science in GALILEO®

Web of Knowledge contains Web of Science, a database of peer-reviewed journals.

*A list of Web of Knowledge databases follows these instructions.

Conduct your search in Web of Science. Mark the checkboxes for the items you want to retain, and click *Add to Marked List*.

When done, click *Marked List* button at top of page.



In Step 1, check the *abstract* and *keywords* boxes.

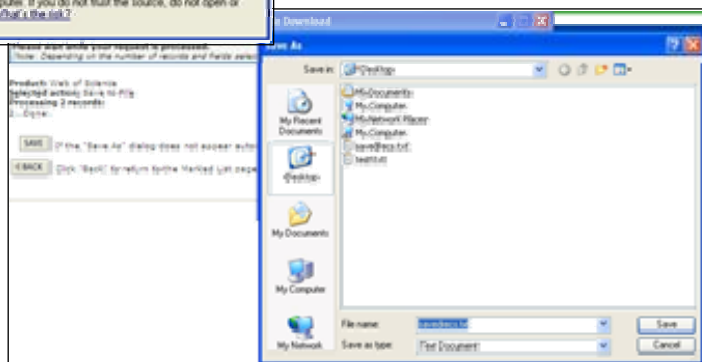


In Step 2, Click *Save to File*.

In the dialog box that opens, click *Save*.

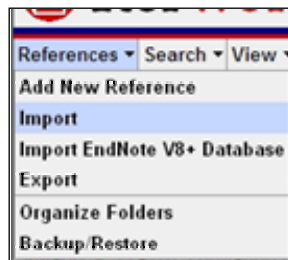


In the second dialog box, navigate to the Desktop, accept the default file name, and click *Save*.

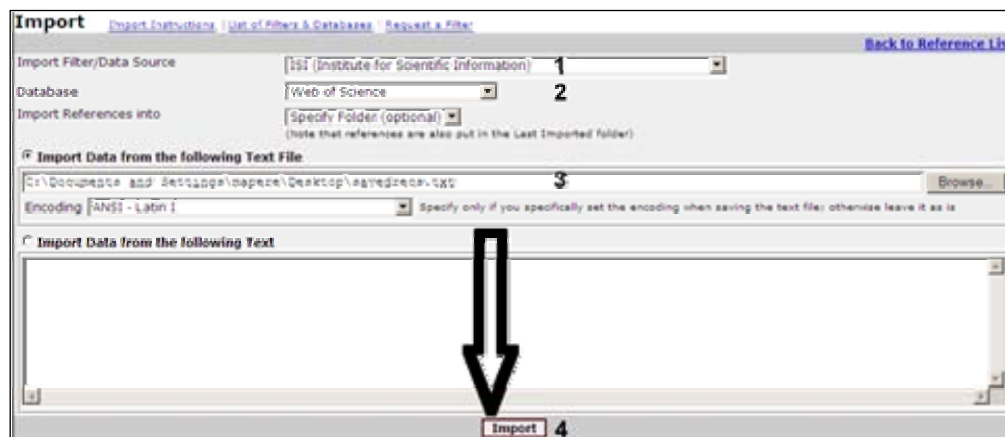


Log into RefWorks when prompted.

Click *References > Import*.

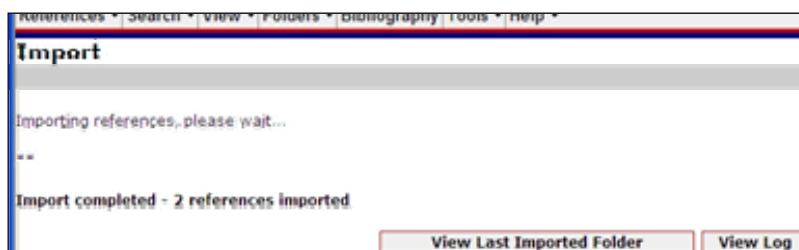


The following window opens:



Change the *Import Filter/Data Source* to *ISI (Institute for Scientific Information)* (1) and *Database* (2) to *Web of Science*. Browse to, and select the file name (3). Then click *Import* (4).

The *Web of Science* citations are placed in the *Last Imported* folder in RefWorks. Click *View Last Imported Folder* to **move them** into another folder.



References left in *Last Imported* will be copied to *References Not in a Folder*, and overwritten the next time you import. Move them to one of your other folders.

***List of CSA Illumina databases in GALILEO®**

Arts & Humanities Citation Index, Current Contents, Science Citation Index. Social Science Citation Index, Web of Science